

Today's Forecast on the USD/ZAR

Friday, October 17, 2008

Current Price: 9.9000 08:30 SA / 06:30 GMT

[See attached charts](#)

## Next Few Days



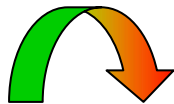
The market has retraced but is likely to bottom out between current levels and 9.3000 before rising once again into the 10.4000 to 11.3000 area (possibly a little higher) before topping out, with key resistance at recent high of 10.8615.

Market expected to rise again before topping out

A break below 8.7975 invalidates this outlook.

## Next Few Weeks

*Forecast target range changed 17 October 2008*



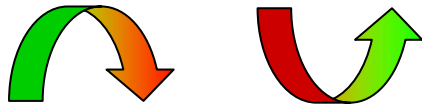
The market has risen beyond the higher probability area and is expected to top out soon between current levels and 11.50 (no higher than 12.30) before falling back down probably below 9.5000, with interim support at 9.7200.

Market expected to top out soon

A break above 12.30 would invalidate the immediate outlook.

## Next Few Months

*Forecast target range changed 17 October 2008*



The market is expected to top out between current levels and 11.50 (no higher than 12.30) before falling back down probably into the 9.5000 to 8.6000 area (no lower than 8.2452), with support at 9.7200 and 8.7500, before bottoming out.

Market expected to top out soon and retrace before rising again

A break above 12.30 would invalidate the immediate outlook and below 8.2452 would invalidate the overall bullish outlook.

## Next Few Years

*Forecast target range changed 22 February 2008 (chart updated 8 October 2008)*



The market is expected to rise above 10.90, more likely into the 11.80 to 18.00 area the next few years, with Fibonacci resistance at 9.7200 and 10.70.

Expect market to rise above 10.90

A break below 7.1640 would likely invalidate this outlook.

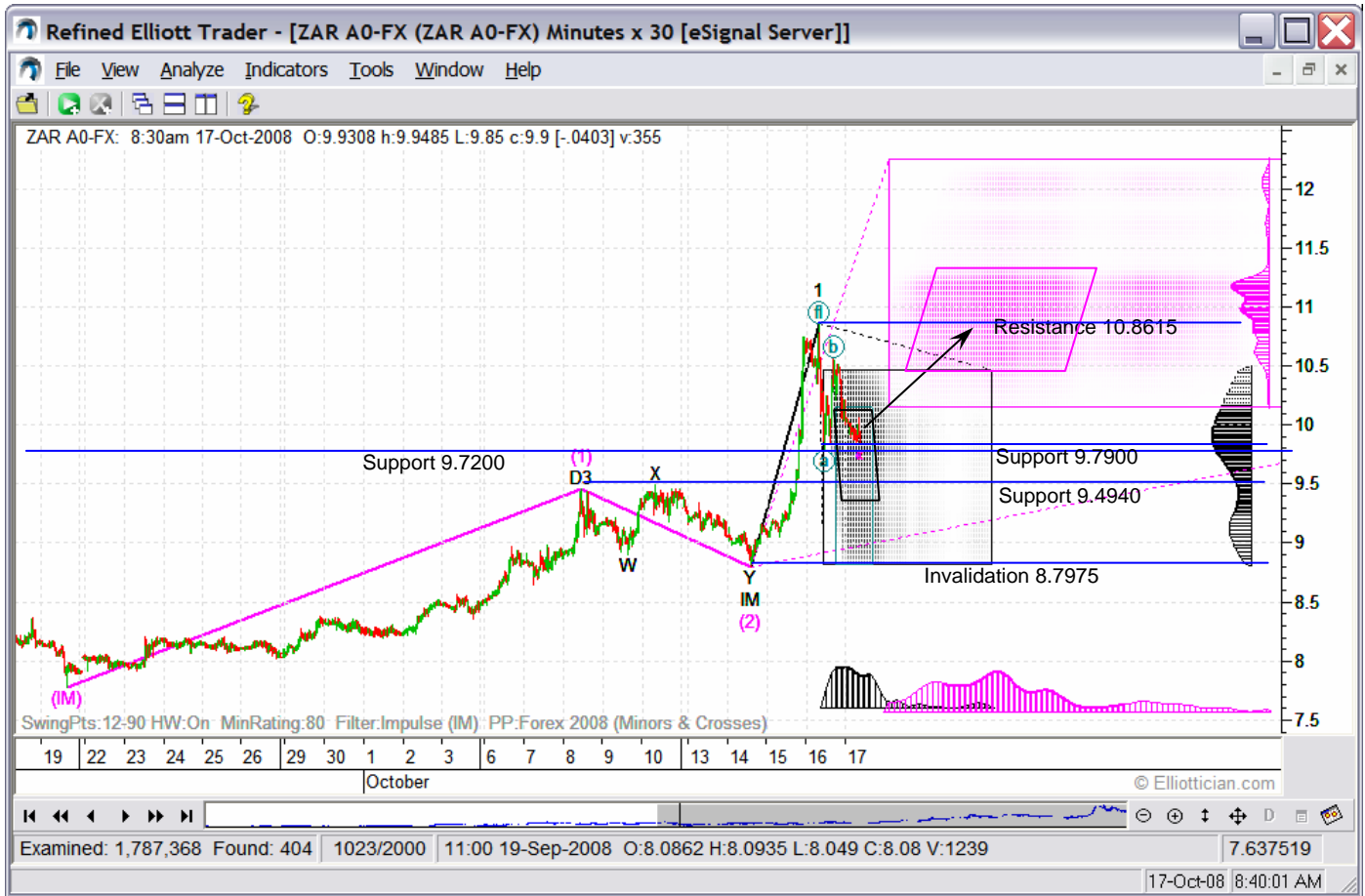
**Dynamic Outcomes**

P.O. Box 5957 Walmer, Port Elizabeth, South Africa Tel: +27 (0)41 373-7160 Fax: +27 (0)41 373-6873

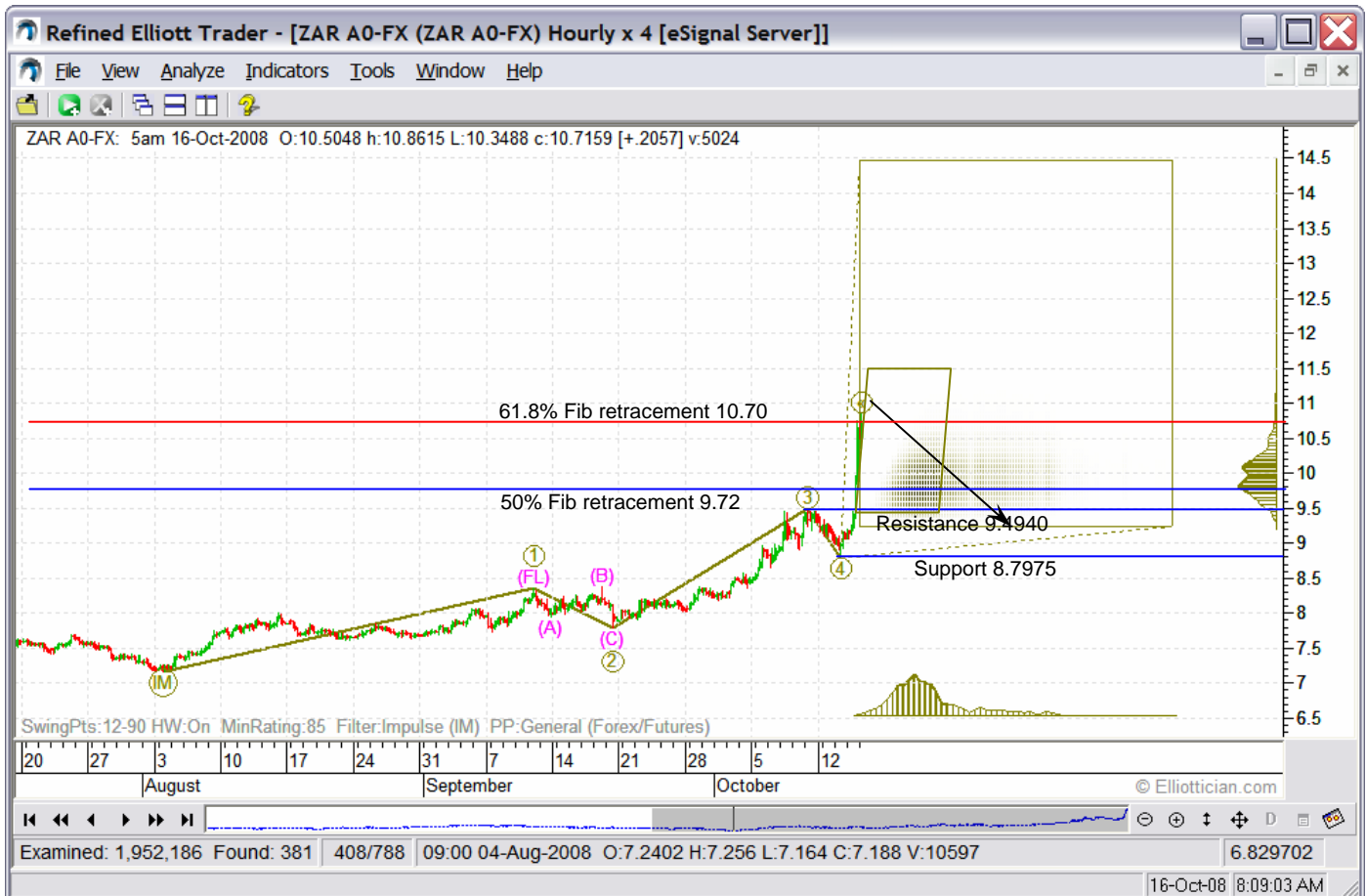
Want some more information on the Rand? Visit [www.randforecasts.co.za](http://www.randforecasts.co.za)

This service uses the **Refined Elliott Trader** software market forecasting pattern recognition technology (see [www.elliottician.com](http://www.elliottician.com)) to produce these market forecasts, based on assessing probabilities. This service delivers to you the most probable future market movement according to the patterns found in the price, time and volume data.

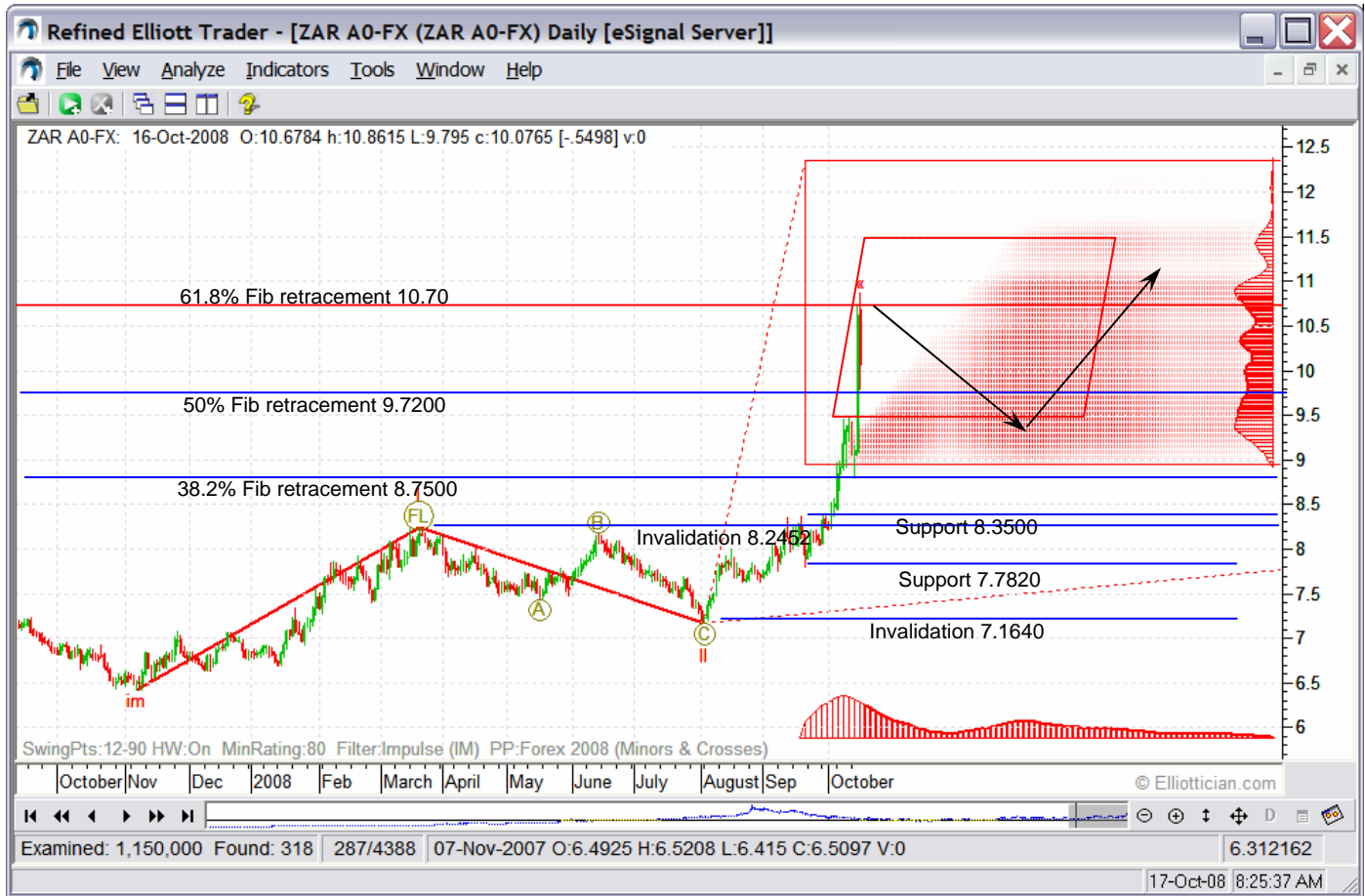
### Next Few Days



### Next Few Weeks



### Next Few Months



### Next Few Years



All charts were produced with the **Refined Elliott Trader** market forecasting software.  
Used with the permission of Elliottician ([www.elliottician.com](http://www.elliottician.com))

The information herein has been prepared solely for general informational and educational purposes and is not an offer to buy or sell, or a solicitation of an offer to buy or sell, the securities or financial products mentioned in the content nor a recommendation to participate in any particular trading strategy. Please consult your broker for trading advice. All trading requires risking money in pursuit of future gain. Do not risk money you cannot afford to lose. All forecasting is based on the statistics of past performance, past performance is no guarantee of future performance. The company is not a broker or licensed investment adviser and therefore is not licensed to give trading advice of any sort nor make specific trading recommendations. CFTC rule 4.41: Hypothetical or simulated performance results have certain inherent limitations. Unlike an actual performance record, simulated results do not represent actual trading. Also, since the trades have not been actually executed, the results may have under-or-over compensated for the impact, if any, of certain market factors, such as lack of liquidity. Simulated trading programs in general are also subject to the fact that they are designed with the benefit of hindsight. No representation is being made that any account will or is likely to achieve profits or losses based on information provided.

E&OE - Errors & omissions excepted